

Fixed bollards M30

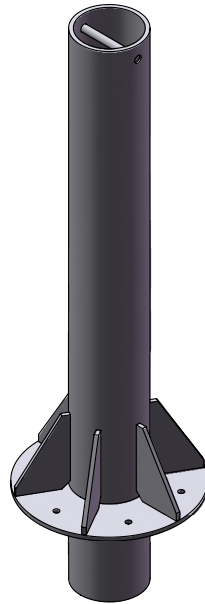
Deep mount

FB275/M30-1000



Product description	
Fixed bollards	FB275/M30-1000
Height	1000 mm
Diameter	273 mm
Material thickness	16 mm
Fixed cylinder	Material Steel S355JR Stainless steel (AISI 304)/(AISI 316)
	Surface treatment Steel version: anti-corrosion treatment - standard painting* Stainless steel version: replaceable sleeve, standard painting* or brushed
	Reflecting strips (height 55 mm) Yes
Impact energy without destruction - impact resistance	250,000 J
Impact energy with destruction - breakout resistance	750,000 J
Connecting lead for LED lighting strips (optional)	Standard 10 m (max. 80 m)
Certified acc. to	ASTM F2656-20 M30 P1 (with negative penetration)

* For orders with no surcharge in RAL to choose, the standard colour is Anthracite grey.



Fixed bollards M30

Deep mount

FB275/M30-1000



Fixed bollard FB275/M30-1000		FB275/M30-100 Article no.
Fixed bollards FB275/M30-1000	Steel painted	PX727023
	Replaceable sleeve stainless steel painted	PX730023
	Replaceable sleeve stainless steel brushed	PX733023
Fixed bollards FB275/M30-1000 + Standard cylinder cover (head) with lighting strips with 25 LEDs	Steel painted	PX728023
	Replaceable sleeve stainless steel painted	PX731023
	Replaceable sleeve stainless steel brushed	PX734023

Optional extras for fixed bollards		Article no.
Rebar cage for FB275/M30-1000		AN990134
Surcharge for painting in RAL color		AN900741
Surcharge for sleeve version in brushed stainless steel (AISI 316)		AN108731
Protection against corrosion - galvanized		AN101841
LED lighting strip power supply		AN107341
LED lighting strip line extensions (80 m max.) supplied in 5 m increments	Per m	AN107551